



## The Next Evolution of Line Sets.

### CASE STUDY #120: MIDEA LINE REPLACEMENT



Completion: 2024  
Location: Greece  
Project Type: Residential  
Application: Mini-Split  
Contractor: Yannis Tsompanoglou

*"I've been so impressed with Python and knew it was the perfect line set for this job. Replacing the copper lines with Python was the right move and a big time saver!"*

- Yannis Tsompanoglou

#### Challenges

- Moving a unit around the corner of a house to a different exterior wall with a couple of tight bends.

#### Solutions

- Flexibility of Python is great to work with.
- The insulation is very resilient and will hold up well to the elements.

#### Benefits

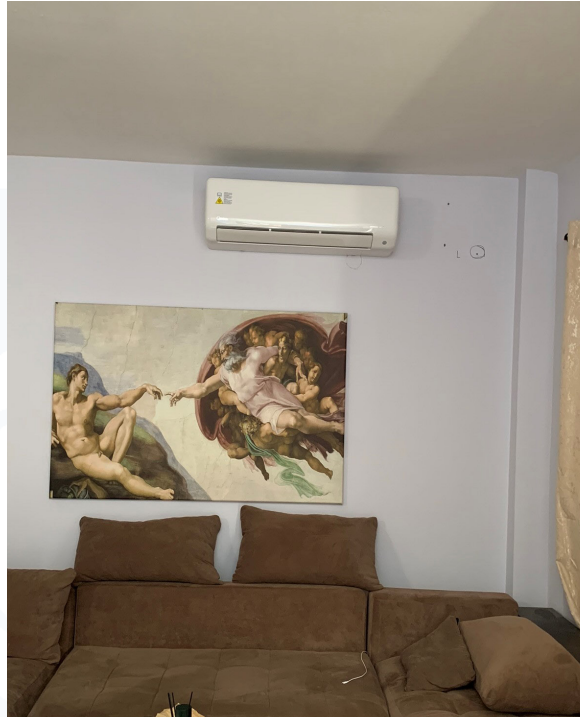
- No swaging/flaring saves us so much time.
- Compression fittings are high quality and pass our pressure test with flying colors.
- Even the insulation is impressive being tear and weather resistant.







# The Next Evolution of Line Sets.



**JOIN THE EVOLUTION**



1116 Vaughn Pkwy, Portland, TN 37148 | 833-PYTHON1 | PYTHONLS.COM

