



## The Next Evolution of Line Sets.

### CASE STUDY #121: CORWITH, IA



Completion: 2024

Location: Corwith, IA

Project Type: Commercial

Application: Mini-Split

Contractor: A.Y. McDonald

Supplier Rep: Specified Systems

*"Python is very easy to cut and terminate. It also holds its shape very well and has been a pleasure to work with.*

*- A.Y. McDonald*

#### Challenges

- Long runs to indoor units.
- Line sets ran through an attic.

#### Solutions

- The large 300' rolls allowed us to cut off what we needed for each run.
- Flare couplings were great to work with and made for easy installation.

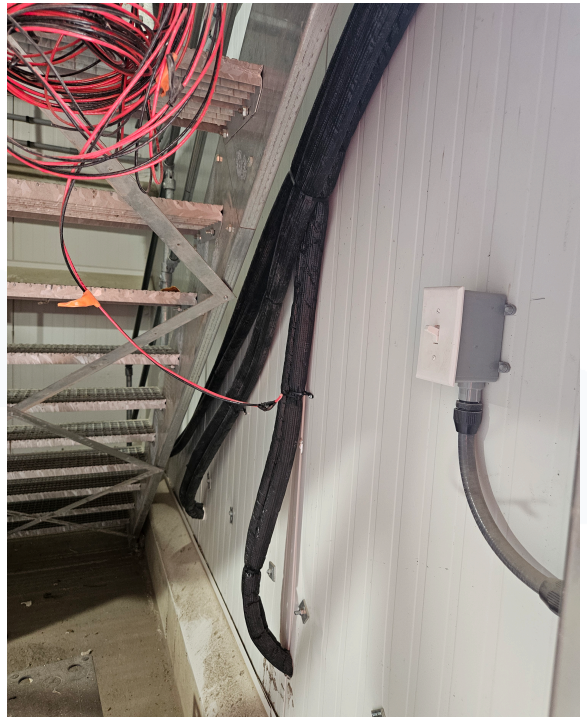
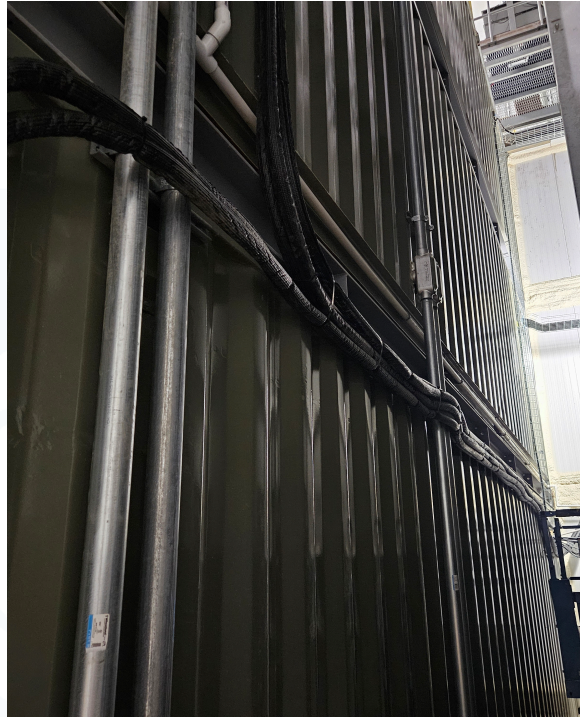
#### Benefits

- Marked footage on the pipe was a plus. It allowed us to easy roll off the correct length of pipe from the 300' reel and not have waste.
- Python is extremely lightweight and made the long runs easier.
- Very easy to bend and holds it shape very well.
- Easy to connect.
- Long lengths available.





## The Next Evolution of Line Sets.



**JOIN THE EVOLUTION**



1116 Vaughn Pkwy, Portland, TN 37148 | 833-PYTHON1 | PYTHONLS.COM

