



## The Next Evolution of Line Sets.

### CASE STUDY #114: INDUSTRIAL POULTRY FARM



Completion: 2024  
Project Type: Industrial  
Application: Split System  
Contractor: Mayes Plumbing & Heating  
Supplier Rep: Cam Campbell / Pepco Sales



#### Challenges

- Products used to maintain sanitation on the poultry farm were eroding the previously-installed copper line sets. Customer needed an alternative line set material that was chemical resistant.

#### Solutions

- Python pert-AL-pert is chemical resistant and withstands exposure to a variety of products, including those commonly used in commercial farming applications.

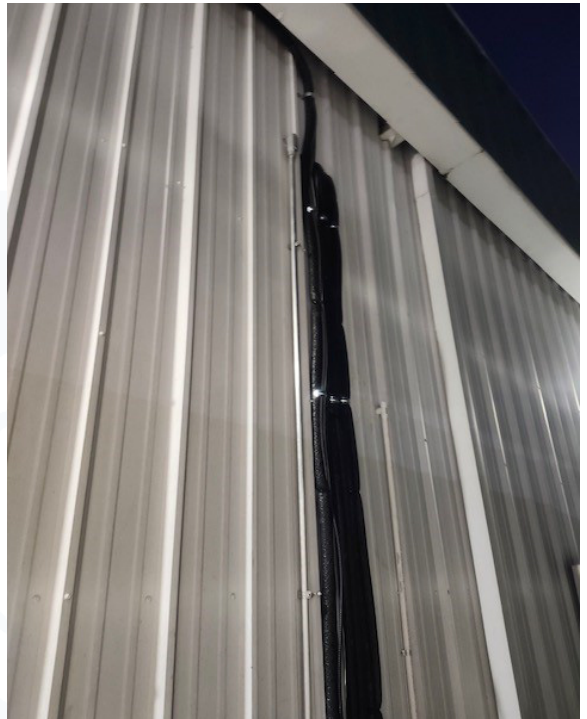
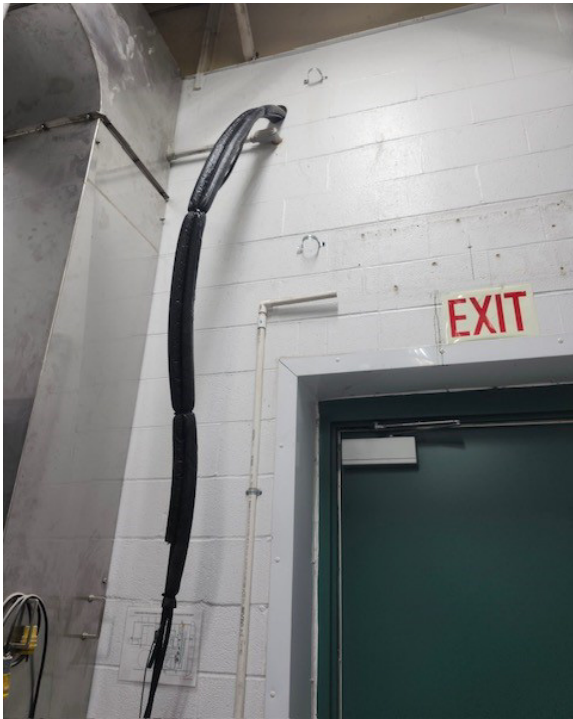
#### Benefits

- Chemical resistant line for longevity.
- Ease of installation.
- Tear resilient insulation.
- Lightweight and easy to bend.





The Next Evolution  
of Line Sets.



**JOIN THE EVOLUTION**



1116 Vaughn Pkwy, Portland, TN 37148 | 833-PYTHON1 | PYTHONLS.COM

