

Installation Guide

REQUIRED TOOLS

Pipe Cutter

Python Chamfer Tools

Two Wrenches

OPTIONAL: Tube Bender

SPLIT SYSTEM INSTALLATIONS USE PYTHON MALE FLARED FITTING

1 Uncoil and straighten end of Python Line Set pipe to be installed. Using a pipe cutter, cut end of pipe creating a clean square cut.

2 Using the Python Chamfering tool that is size specific for the pipe being installed, fully insert the tool into end of pipe and rotate a minimum of 3 revolutions, or for 2 seconds in a drill, to properly open and chamfer the inner and outer pipe edge. Keep the tool aligned with the pipe while inserting, chamfering, and removing it, avoid rocking or bending the tool while it's inserted in the pipe.

Note: Keep Python fittings clear of any required brazing and do not make any brazed connections to components connected to Python fittings and Python pipe.

3 Mark the pipe, at the reference shoulder of the chamfer tool or with the insertion depth gauge, before removing the tool and be sure the pipe chamfered debris is pulled away from the end of the pipe.

4 Slide the Python compression nut, then Python compression ring over the end of the pipe.

5 Insert the nipple of the fitting into the end of the pipe making sure that the pipe fully seats into the bottom pocket of the fitting adaptor and the mark is at the thread of the adaptor. Keep the fitting adaptor aligned with the pipe while inserting and avoid rocking, bending, or twisting the fitting adaptor while inserting into the pipe.

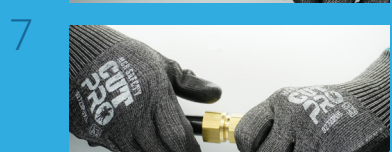
Note: The plastic washer and O-rings have been preinstalled onto the fitting adaptor. If these parts are missing, do not use the fitting.

6 Slide the compression ring until it fully meets the fitting adaptor.

7 Slide the compression nut over the compression ring until it meets the adaptor threads.

8 Hand tighten the compression nut onto the compression fitting adaptor, then use one wrench to hold the fitting adaptor while tightening the nut with a second wrench until the nut and fitting adaptor meet. Do not over tighten.

Note: Python Line Set copper stub adaptors and flare nuts are offered to connect the Python male compression fitting to the HVAC equipment valve.



DIMENSIONAL CHARACTERISTICS

Size	Nominal OD	Nominal ID	Max Design Pressure	Bend Tool Size	Minimum Bend Radius	Torque Specification
1/4"	.465"	.190"	700 psi	1/2"	1-1/2"	25 lb-ft
3/8"	.465"	.311"	700 psi	1/2"	1-1/2"	25 lb-ft
1/2"	.618"	.436"	700 psi	5/8"	2-1/4"	30 lb-ft
5/8"	.765"	.555"	700 psi	3/4"	2-1/2"	50 lb-ft
3/4"	.909"	.680"	700 psi	7/8"	2-3/4"	100-110 lb-ft
7/8"	1.026"	.785"	650 psi	1"	6"	100-110 lb-ft

SCAN FOR INSTALL VIDEO



NOTE: The bend radius stated are the minimums for mechanical bend equipment only. The bend radius would be the same in all weather conditions. Torque Specification for reference only, as fittings are bottom out.



Installation Guide

MINI-SPLIT INSTALLATIONS USE PYTHON FEMALE FLARED FITTING

- 1 Uncoil and straighten end of Python Line Set pipe to be installed. Using a pipe cutter, cut end of pipe creating a clean square cut.
- 2 Using the Python Chamfering tool that is size specific for the pipe being installed, fully insert the tool into end of pipe and rotate a minimum of 3 revolutions, or for 2 seconds in a drill, to properly open and chamfer the inner and outer pipe edge. Keep the tool aligned with the pipe while inserting, chamfering, and removing it, avoid rocking or bending the tool while it's inserted in the pipe.

Note: Keep Python fittings clear of any required brazing and do not make any brazed connections to components connected to Python fittings and Python pipe.

- 3 Mark the pipe, at the reference shoulder of the chamfer tool or with the insertion depth gauge, before removing the tool and be sure the pipe chamfered debris is pulled away from the end of the pipe.

- 4 Thread the fitting adaptor onto the king valve male connection point and tighten to required torque.

Note: A copper gasket is provided for this connection and fitting should not be used if copper gasket is missing.

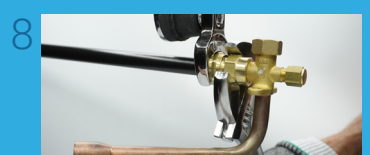
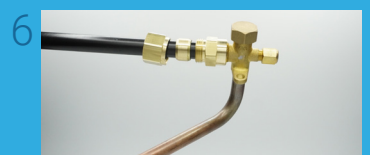
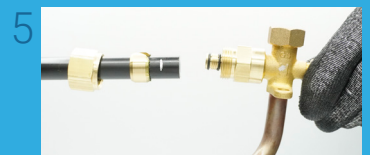
- 5 Slide the compression nut then compression ring over the end of the pipe.
- 6 Insert the nipple of the fitting into the end of the pipe making sure that the pipe fully seats into the bottom pocket of the fitting adaptor and the mark is at the thread of the adaptor. Keep the fitting adaptor aligned with the pipe while inserting and avoid rocking, bending, or twisting the fitting adaptor while inserting into the pipe.

Note: The plastic washer and O-rings have been preinstalled onto the fitting adaptor. If these parts are missing do not use the fitting.

- 7 Slide the compression nut over the compression ring until it meets the adaptor threads.

- 8 Hand tighten the compression nut onto the compression fitting adaptor, then use one wrench to hold the fitting adaptor while tightening the nut with a second wrench until the nut and fitting adaptor meet. Do not over tighten.

SCAN FOR
INSTALL VIDEO



The Next Generation
of Line Sets.

⚠ WARNING: This product can expose you to chemicals including lead which are known to the State of California to cause cancer and birth defects or other reproductive harm. For more information go to www.P65Warnings.ca.gov

