



The Next Evolution of Line Sets.

CASE STUDY #118: TOYOTOMI ERAI R32 INVERTER



Completion: 2024

Location: Greece

Project Type: Residential

Application: Mini-Split

Contractor: Yannis Tsompanoglou / Kostas Stergiou

Python Tech: Angelos Ioannidis

"We were very impressed by the ease of this install and how quick it was compared with using copper. Python proved it will allow for more installs in a shorter period of time."

- Yannis & Kostas

Challenges

- This was a challenging and tight install with two concrete wall passthroughs, three 90° bends, and multiple reshapes of the pipe.

Solutions

- Python's forgiveness is great for making multiple bends and the flexibility makes it very easy to handle.
- The insulation was very tough and saved us some money in the end.

Benefits

- Quicker install than copper.
- Very flexible and forgiving. Could rebend multiple times to get the perfect bend.
- Tear resilient insulation.
- Long continuous run.





The Next Evolution of Line Sets.

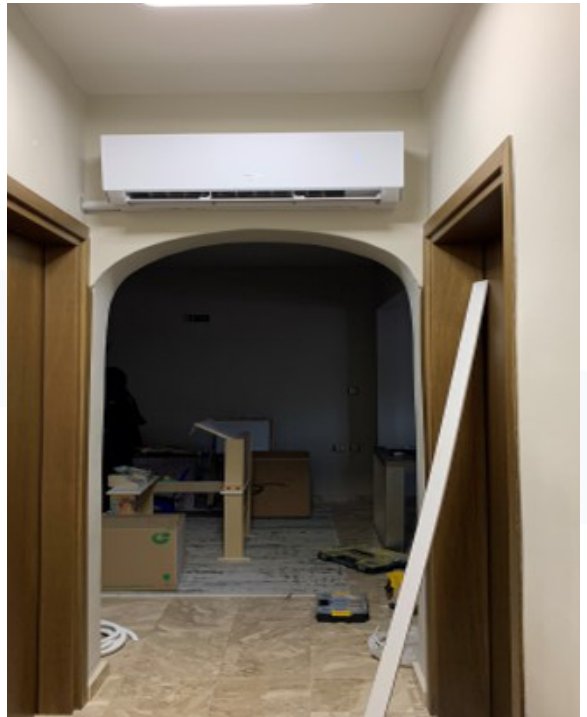


JOIN THE EVOLUTION





The Next Evolution of Line Sets.



JOIN THE EVOLUTION



1116 Vaughn Pkwy, Portland, TN 37148 | 833-PYTHON1 | PYTHONLS.COM





The Next Evolution of Line Sets.



JOIN THE EVOLUTION



1116 Vaughn Pkwy, Portland, TN 37148 | 833-PYTHON1 | PYTHONLS.COM

